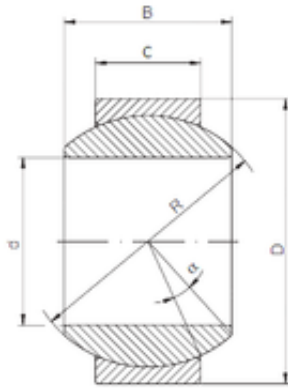




ISO GE 180 HS-2RS plain bearings



Bearing No. GE 180 HS-2RS

Size	180x290x155 mm
Bore Diameter	180 mm
Outer Diameter	290 mm
Width	155 mm
d	180 mm
D	290 mm
B	155 mm
C	100 mm
R	250 mm
Angle	14 °

GE 180 HS-2RS Bearing 2D drawings and 3D CAD models